



88 Series Bulkhead Adapters



MaJoR Fiber Optics many different varieties of Bulkhead Adapters and Hybrid Adapters, are designed to provide a solution for the many types of connectors in todays optical market.

Applications

- LAN, WAN & Metro Networks
- Telecommunication Networks
- Labs
- Test & Measurement Systems
- CATV
- Passive Optical Networks

MaJoR Fiber Optics, Inc.

1565 Old Forge Road
Bartlett, IL 60103

Phone: 630-483-2054

Fax: 630-483-2072

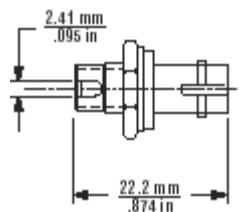
E-Mail

Info @majorfiberoptics.com

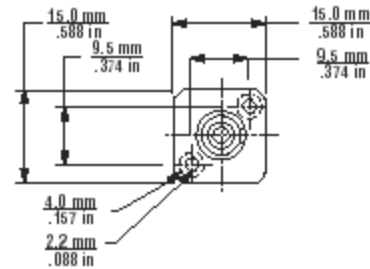
Web: www.majorfiberoptics.com

- Optical performance 100% factory tested
- Available in Singlemode or Multimode
- Provides adaptability for flat, PC, UPC & APC polishes
- Low Insertion Loss

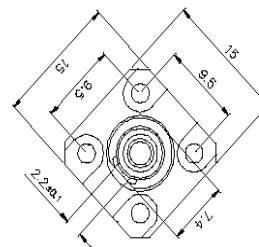
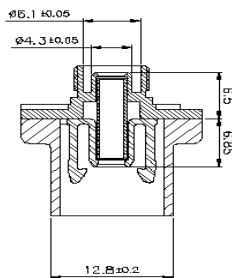
Repeatability	250 matings < 0.20dB
Operating Temperature	-40 ~+75°C
Storage Temperature	-55 ~+85°C
Thermal Stability	< 0.20dB -60 ~+100°C



88-FJ-1



88-FY-1



88-FJ-7A
FC-ST, flanged, coupling nut on the FC side
Nickel Plated Brass, Zirconia Ceramic Sleeve

88-FJ-7B
FC-ST, flanged, coupling nut on the ST side
Nickel Plated Brass, Zirconia Ceramic Sleeve

88-FJ-1
FC-ST, bulkhead, mount from the FC side
Nickel Plated Brass, Zirconia Ceramic Sleeve

88-QU-1
SC/APC-FC/APC bulkhead
Nickel Plated Brass/die cast Zinc, Zirconia Ceramic Sleeve

88-FY-1
SC-FC bulkhead
Nickel Plated Brass/die cast Zinc, Zirconia Ceramic Sleeve

88-FY-1-P
SC-FC Bulkhead
Nickel Plated Brass/die cast Zinc, Phosphor Bronze Sleeve

88-AE-7A or 7B
FC-906SMA, flanged
A=Coupling Nut on FC side, B=Coupling Nut on SMA side
Nickel Plated Brass, Delrin sleeve

88-AE-3
FC-906SMA, non-flanged
Nickel Plated Brass, Delrin Sleeve

88-AE-1
FC-906SMA, bulkhead
Nickel Plated Brass, Delrin Sleeve

88-EN-7A or 7B
FC-905SMA, flanged
A=Coupling Nut on FC side, B=Coupling Nut on SMA side
Nickel Plated Brass, Delrin sleeve

88-EN-3
FC-905SMA, non-flanged
Nickel Plated Brass, Delrin Sleeve

88-EN-1
FC-905SMA, bulkhead
Nickel Plated Brass, Delrin Sleeve

88-AG-7A or 7B
ST-906SMA, flanged
A=Coupling Nut on SMA side, B=Coupling Nut on ST side
Nickel Plated Brass, Delrin sleeve

88-AG-3
ST-906SMA, non-flanged
Nickel Plated Brass, Delrin Sleeve

88-AG-1
ST-906SMA, bulkhead
Nickel Plated Brass, Delrin Sleeve

88-GN-7A or 7B
ST-905SMA, flanged
A=Coupling Nut on SMA side, B=Coupling Nut on ST side
Nickel Plated Brass, Delrin sleeve

88-GN-3
ST-905SMA, non-flanged
Nickel Plated Brass, Delrin Sleeve

88-GN-1
ST-905SMA, bulkhead
Nickel Plated Brass, Delrin Sleeve

88-YY-8
SC-SC simplex with flange Plastic, Zirconia Ceramic Sleeve

88-YY-2
SC-SC duplex with flange Plastic, Zirconia Ceramic Sleeve

88-YY-4
SC-SC Simplex Quad Plastic, Zirconia Ceramic Sleeve

88-LL-1
LC-LC simplex Plastic, Zirconia Ceramic Sleeve

88-LL-2
LC-LC duplex Plastic, Zirconia Ceramic Sleeve

88-LY-1
LC-SC Singlemode Simplex Plastic, Phosphor Bronze Sleeve

88-LY-1-M
LC-SC Multimode Simplex Plastic, Phosphor Bronze Sleeve

88-JL-1
ST to LC Simplex Plastic, Phosphor Bronze Sleeve

88-FL-1
FC to LC Simplex Plastic, Phosphor Bronze Sleeve

88-MT-1
MT-RJ Adapter Plastic

88-LM-1
LC to MU Simplex Plastic, Zirconia Ceramic Sleeve

88-MM-1P
MU to MU Simplex—Patch Panel Mount
Plastic, Zirconia Ceramic Sleeve

88-MM-2P
MU to MU Duplex—Patch Panel Mount

88-MM-1B
MU to MU Simplex—Board Mount

88-MM-2B
MU to MU Duplex—Board Mount